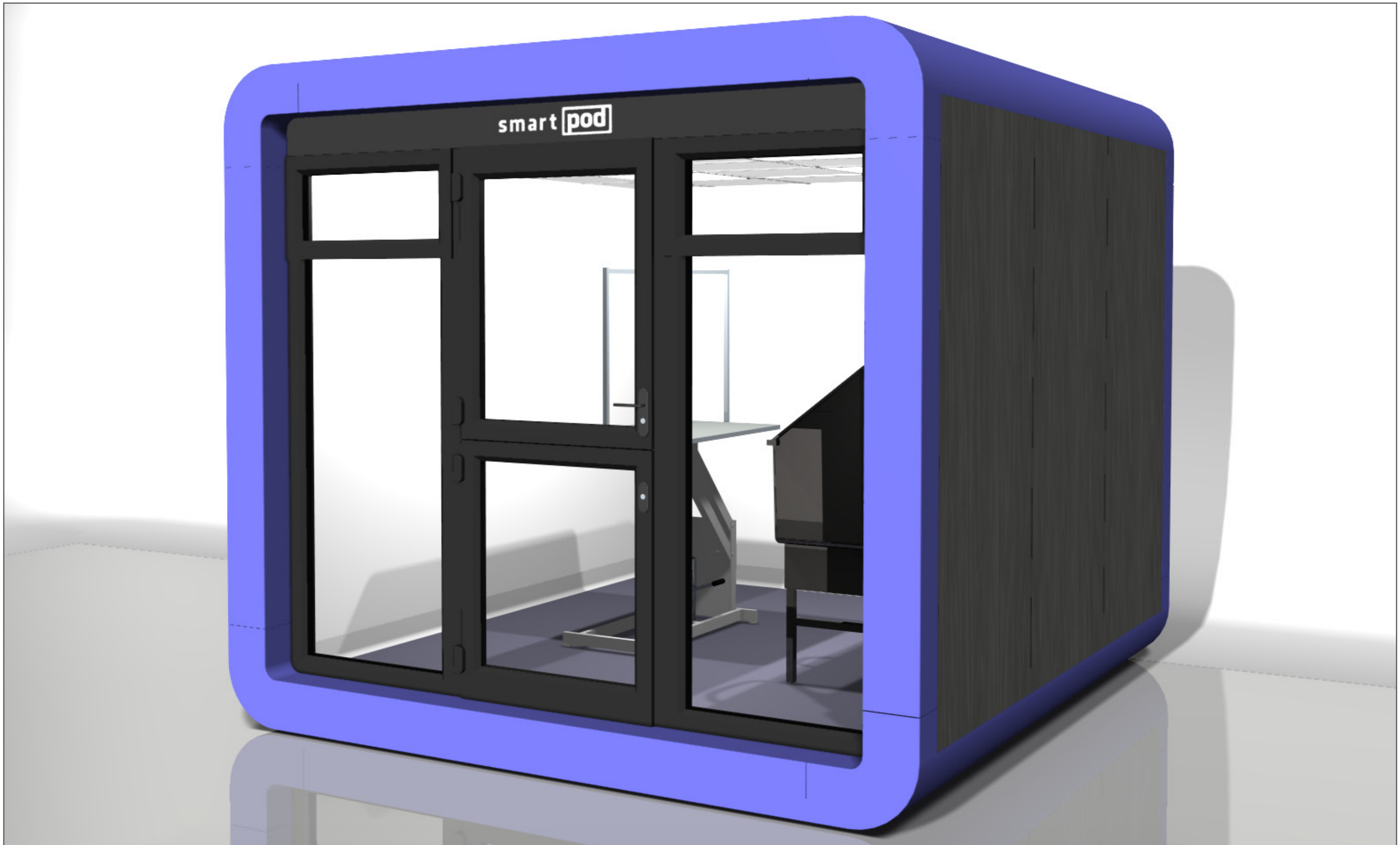


**smart**   
**one space...endless uses**

# **Professional Dog Grooming Pod**









3m x 3m Professional Dog Grooming Pod



3m x 3m Professional Dog Grooming Pod



3m x 3m Professional Dog Grooming Pod



3m x 3m Professional Dog Grooming Pod



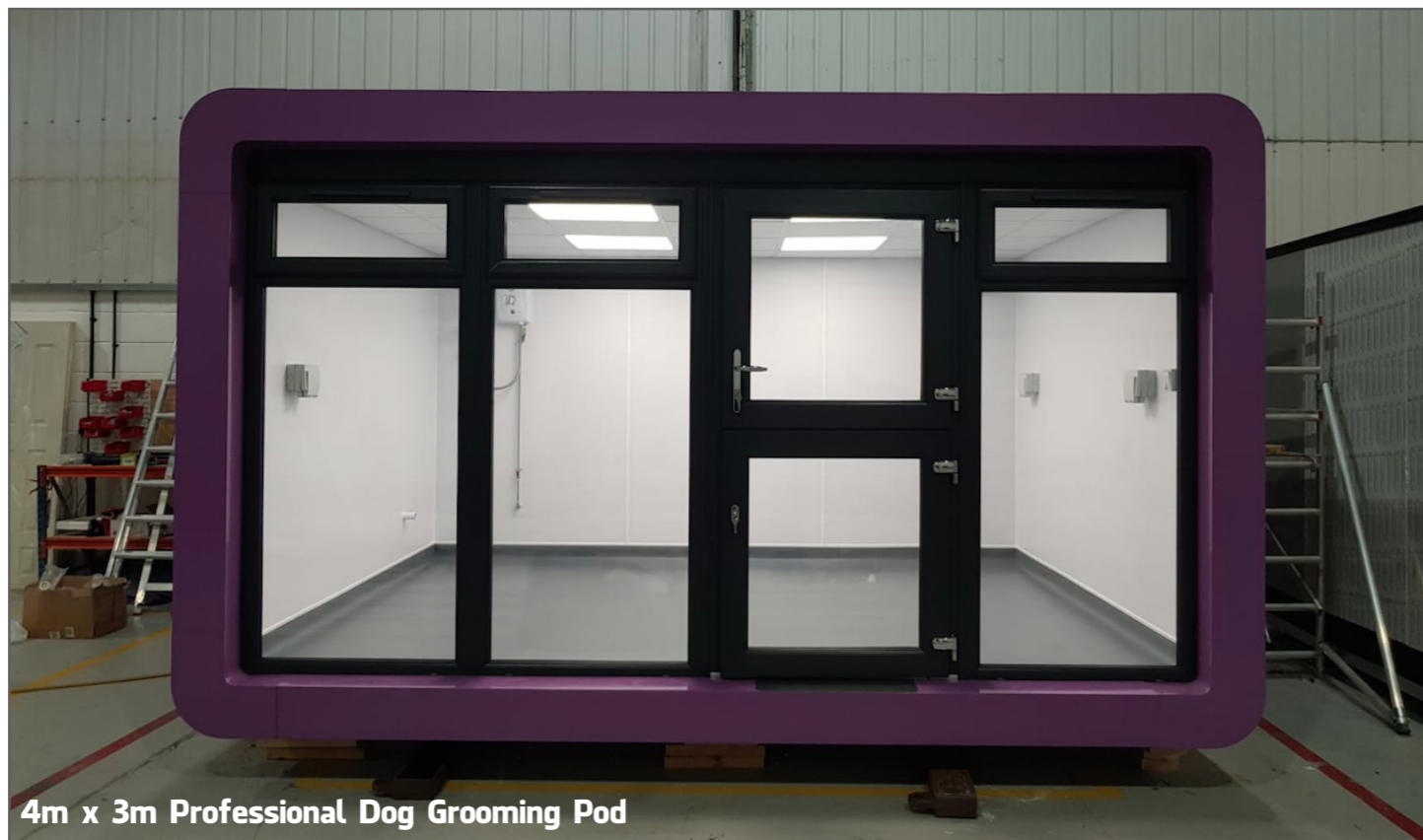
4m x 2.4m Professional Dog Grooming Pod



4m x 2.4m Professional Dog Grooming Pod



4m x 3m Professional Dog Grooming Pod

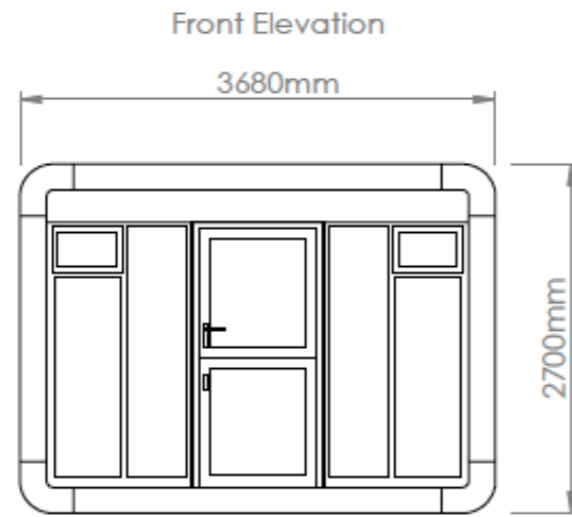


4m x 3m Professional Dog Grooming Pod

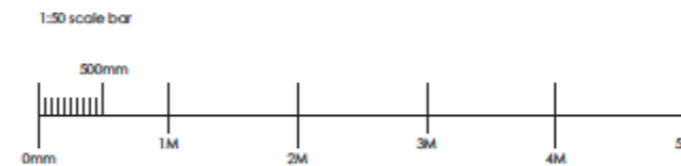
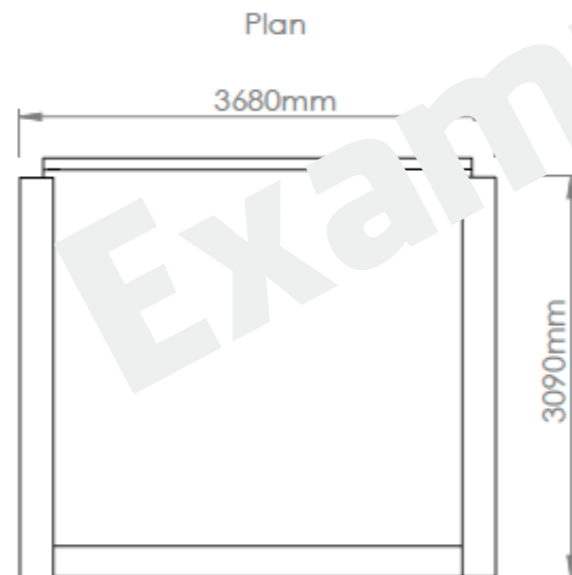
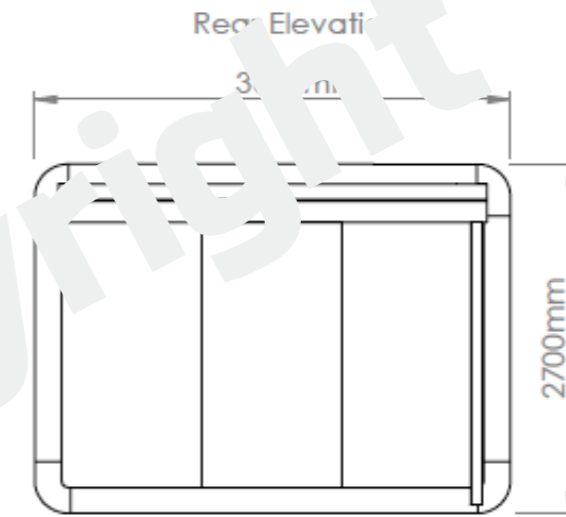
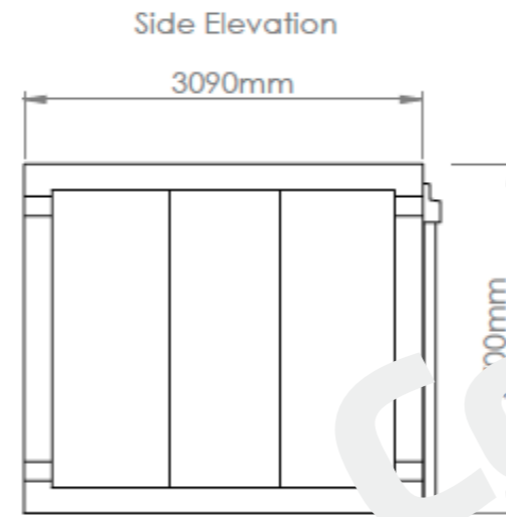


4m x 3m Professional Dog Grooming Pod

## 3.6x3x2.7 Smartpod - Elevations & Plan View



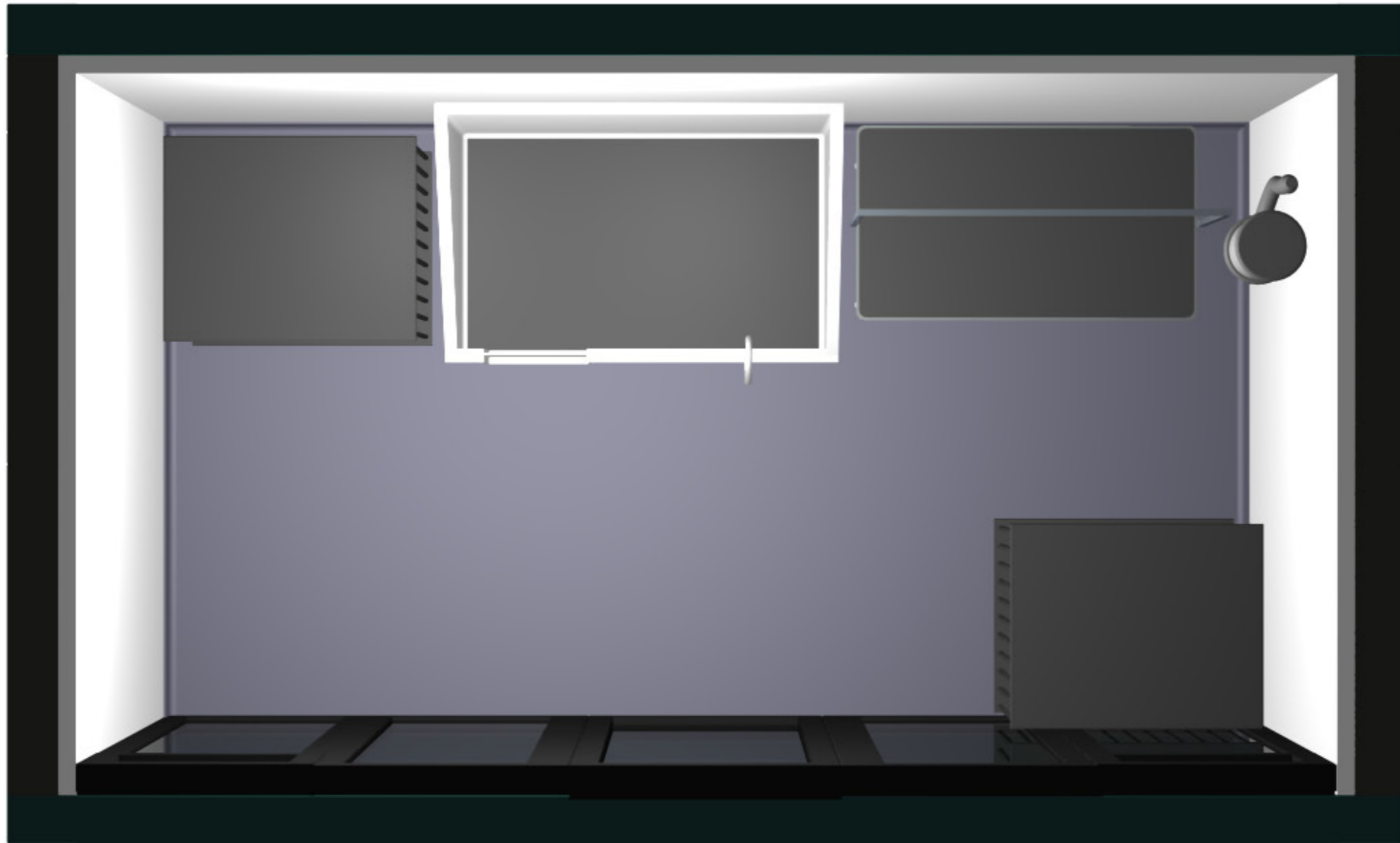
NOTE: Glazing panel dimensions may vary.



 one space...endless uses		PROJECT:	
		Dog Grooming Pod	
DRAWN BY	NAME	DATE	DWG NO.
	JM	October 2021	SP-TCSP- 3.6x3x2.7
SCALE: 1:50		DO NOT SCALE DRAWING	REVISION: A
			SHEET 1 OF 1







**Internally & externally finished to requirements including;**  
**RAL finish feature trim surround**  
**Washable hygienic wall panels**  
**Pet robust flooring**  
**Hygienic suspended ceiling with LED lights**  
**All electrics**  
**Double glazed with toughened glass**

**The pods are;**  
**Factory built and delivered ready to use (depending on access – built on site available)**  
**Comply with current building regulations**  
**Easily relocated**  
**10 year structural warranty – life expectancy of 35+ years**

**smart**   
**one space...endless uses**

**Smartpod  
Unit 1 Tuxford Business Park  
Ashvale Road  
Tuxford  
NG22 0NH**

**Tel: 01709 570 720  
E: [info@teamsmartpod.com](mailto:info@teamsmartpod.com)  
W: [www.smartpod.space](http://www.smartpod.space)**